

# Configuring a NextGen Server for an Open M [DTM] NetBIOS Client

The following sections describe how to configure your network to use an Open M NextGen for Windows NT or Windows 95 server.

- [Overview](#) page A-2
- [Configuring Your Network](#) page A-3
- [Configuring the Open M NextGen System](#) page A-3
  - [Determining Your Adapter Number](#) page A-3
  - [Configuring NetBIOS for Open M](#) page A-5
- [Configuring NetBIOS for Open M \[DTM\]](#) page A-7
  - [The Master Server Namespace Map](#) page A-7
  - [The DOS Environment Variable OPENM\\_NSMAP](#) page A-7
- [DTM-NetBIOS Operation](#) page A-8

---

## Overview

Open M [DTM] Version 6.5 allows you to configure your NetBIOS network so that you can use an Open M NextGen for Windows 95 or Open M NextGen for Windows NT as a server for DTM clients. With this new functionality, Open M NextGen for Windows 95 or Open M NextGen for Windows NT can act as a database server, providing most of the services that DTM servers provide.

By utilizing Distributed Cache Protocol (DCP), Open M NextGen for Windows 95 or Open M NextGen for Windows NT transparently offer the same high-speed networking and caching advantages employed by DTM networking.

---

## Configuring Your Network

To configure your network, you must configure:

- The Open M NextGen for Windows 95 or Open M NextGen for Windows NT system you want to use as a server
- The Open M [DTM] system you want to use as a client.

### Configuring the Open M NextGen System

You need to take two steps to configure the Open M NextGen for Windows 95 or Open M NextGen for Windows NT system as a server:

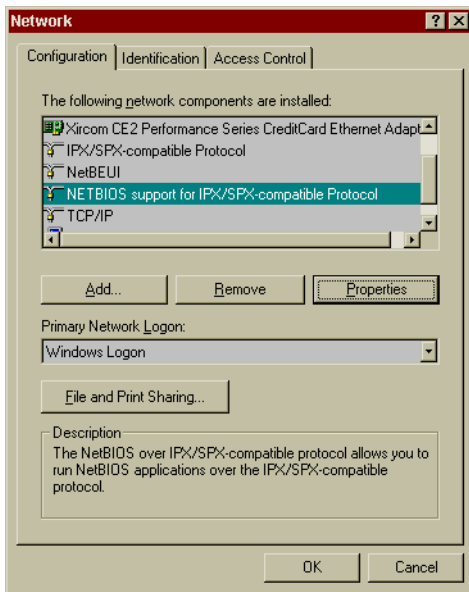
1. Determine your adapter number
2. Configure NetBIOS from Open M NextGen

#### Determining Your Adapter Number

Before you can configure DTM-NetBIOS, you need to determine your adapter number on either:

- Windows 95
- Windows NT

If your Open M NextGen server is on a Windows 95 system, you always use zero (0) as your adapter number to select the default NetBIOS configuration as set up under the **Network** icon on your Windows 95 control panel. The following shows the screen you see when you choose the **Network** icon from the Windows 95 control panel.



If your Open M NextGen server is on a Windows NT system, check the configuration of the NetBIOS Interface in **Network** under your Windows NT Control Panel to find out which adapter number corresponds to the protocol you wish to use.

Take the following steps:

1. Open **Settings** and choose the **Control Panel**.
2. Double-click on the **Network** icon.
3. Click on the **Services** tab, and select NetBIOS Interface from the displayed list.
4. Click on **Properties**. The Properties window displays the *lana numbers* corresponding to the NetBIOS protocols you are running. The lana number for the network route you want to use is the *adapter number* you need to configure DTM-NetBIOS in Open M NextGen.

For example, assume you wish to use the network protocol NetBIOS over TCP/IP. You find the abbreviation for that protocol in the Properties window (NetBT) and the lana number corresponding to it is 2. You use 2 as your adapter number to configure NetBIOS in Open M NextGen.

**Table A-1** provides the abbreviations used in the **Properties** window for the various NetBIOS protocols.

**Table A-1: Abbreviations of NetBIOS Protocols**

Abbreviation	Network Protocol
Nbf	NetBEUI
NwlnkNB->NwlnkIpx	NetBIOS over IPX/SPX
NetBT	NetBIOS over TCP/IP

### Configuring NetBIOS for Open M

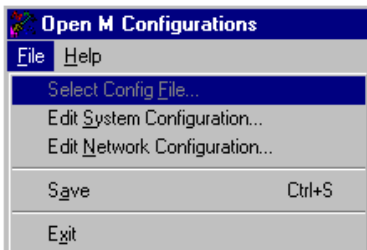
To set up DTM-Compatible networking, use the utilities for configuring Open M NextGen networking. Take the following steps:

1. Choose the Configuration Button from the Open M NextGen toolbar:



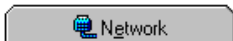
You then see the Open M NextGen Configurations window.

2. Choose the **E**dit **N**etwork Configuration option from the **F**ile menu:

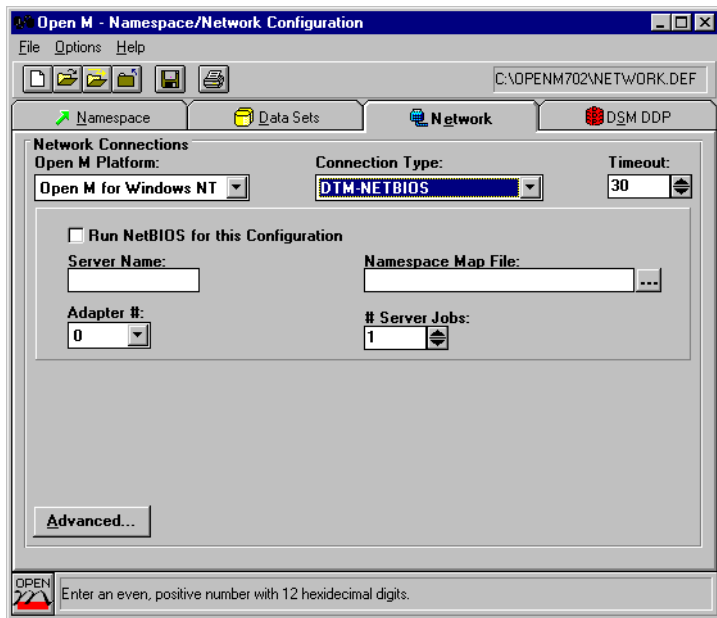


You then see the Namespace/Network Configuration window.

3. Choose the **N**etwork tab:



You then see the Network Configuration window, as shown in the following illustration:



4. Choose DTM-NETBIOS in the **Connection Type** field.
5. Enter a server name of 15 characters or less in the **Server Name** field. This name must be a unique NetBIOS name on the network. Do NOT choose your NT node name because NT registers this name with NetBIOS.
6. Choose an adapter number in the **Adapter #** field. This adapter number represents the underlying NetBIOS network protocol used on your system. To determine the correct number for your configuration, follow the previous instructions in the section **“Determining Your Adapter Number”** on page A-3.

**Note:** For Windows 95 you must always select 0 to configure Open M NextGen to use the default NetBIOS protocol as configured under the Network icon in the Windows 95 Control Panel.

7. Enter the name of the Namespace Map file in the **Namespace Map File** field. This file is built by a DTM master server whenever the DTM namespace is compiled. This file should exist in a shared directory where both the DTM Master Server and the Open M NextGen server can access it. You should include the drive and full path name.

**Note:** This is not the namespace map file used by the Open M [DTM] master. This is another DOS file that is created when the Open M [DTM] map is compiled.

8. Enter the number of server processes in the # **Server Jobs** field. The number you enter is the number of server processes you want to run. On a larger network, increase the number of server processes to achieve better performance.
9. Check the **Run NetBIOS for this Configuration** checkbox.

## Configuring NetBIOS for Open M [DTM]

DTM clients must upgrade to Open M [DTM] Version 6.5 to use DTM-compatible networking with Open M NextGen. This is the only reconfiguration that needs to be done to the clients. However, there are some additional steps you need to take.

### The Master Server Namespace Map

The Namespace Map on the master server must reference the Open M NextGen database, not the DTM datasets.

For Open M NextGen for Windows 95 or Open M NextGen for Windows NT, you reference the Open M NextGen database by directory name. For example, globals stored in `d:\openm\mgr\openm.dat` on node 5 are referenced as follows:

```
SERVER 5:      TEST
DATASET       //5/"d:\openm\mgr"
NSPACE MGR:   USER-RTN, //5/"d:\openm\mgr"
```

The dataset name appears in quotes because the Open M NextGen for Windows 95 or Open M NextGen for Windows NT directory is not a DTM dataset, and DTM must interpret this value without any case conversion. As with DCP networking, the database reference is case sensitive on some platforms.

### The DOS Environment Variable OPENM\_NSMAP

After you change the namespace map on the master server, you need to set the DOS environment variable `OPENM_NSMAP` to the name of the file where the compiled namespace map will be stored. For example,

```
C:\SET OPENM_NSMAP=E:\OPENM\MGR\OPENM.MAP
```

Whenever the master server compiles the namespace map, entries go to the file defined in the DOS environment variable (`E:\OPENM\MGR\OPENM.MAP` in the example).

This file should be located on a shared directory accessible by the Open M NextGen server. You must use the drive and full path name for the file so that it can be located by all systems. This file is the same file you added with the Open

M NextGen for Windows 95 or Open M NextGen for Windows NT configuration utilities when setting up the Network Configuration.

The following example shows a sample DTM.MAP file:

**Example:**

```
SERVER 2: TEST
SERVER 3: ABC

DATASET //1/USER-RTN
DATASET //2/"c:\openm\mgr"
DATASET //2/"c:\openm\mgr\user"
DATASET //3/"C:\OPENM\ABC"

NSPACE %PERCENT:
  MAP %* TO %SYSRTN /OVER
  MAP ^%* TO %SYSGBL /OVER

NSPACE SYS: %SYSRTN, %SYSGBL
  INHERIT %PERCENT

NSPACE MGR: //1/USER-RTN, //2/"c:\openm\mgr"
  INHERIT %PERCENT

NSPACE USER: //1/USER-RTN, //2/"c:\openm\mgr\user"
  INHERIT %PERCENT
```

**Note:** You cannot map DTM routines to a Windows 95/NT machine.

## DTM-NetBIOS Operation

The Open M NextGen for Windows 95 or Open M NextGen for Windows NT server starts up automatically. You see the processes DTNBSVR and DTNSMAP when running the %SS utility. The DTNSMAP process periodically polls the namespace map and sets up the dsid and directory reference.

There is a status log you can view in the %SYS namespace with the utility DTLOG. This log includes status and error messages.

Startup for DTM clients and servers is the same as in previous versions. All of the NetBIOS utilities work properly, except for %nettest. You should also note that a %dsstatus of an Open M NextGen directory does not work.